

Tren del vino

TENALACH
CONSULTING





CIMALSA
Logística i mobilitat



FGC
Ferrocarrils
de la Generalitat
de Catalunya

in-move



Clúster Vitivinícola Català



Unidad de transporte intermodal

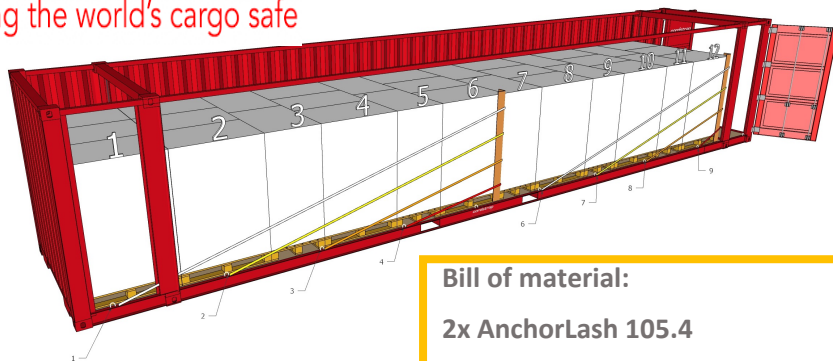


+1 palet!

Aseguramiento de la carga

cordstrap

Keeping the world's cargo safe

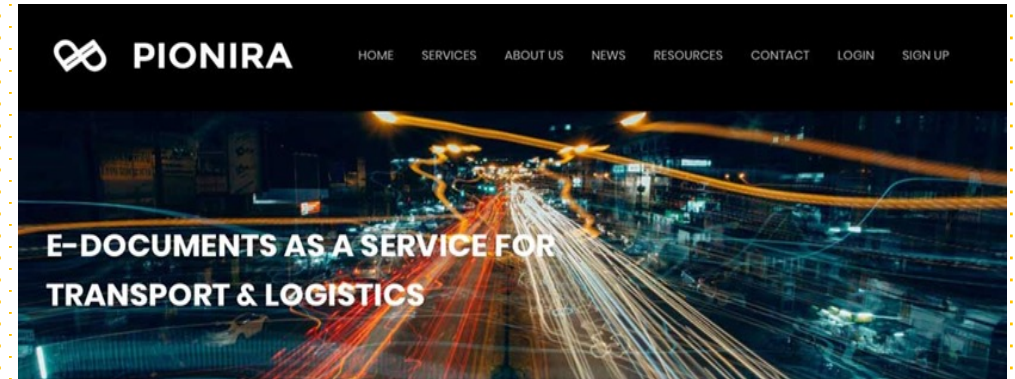


Bill of material:

2x AnchorLash 105.4

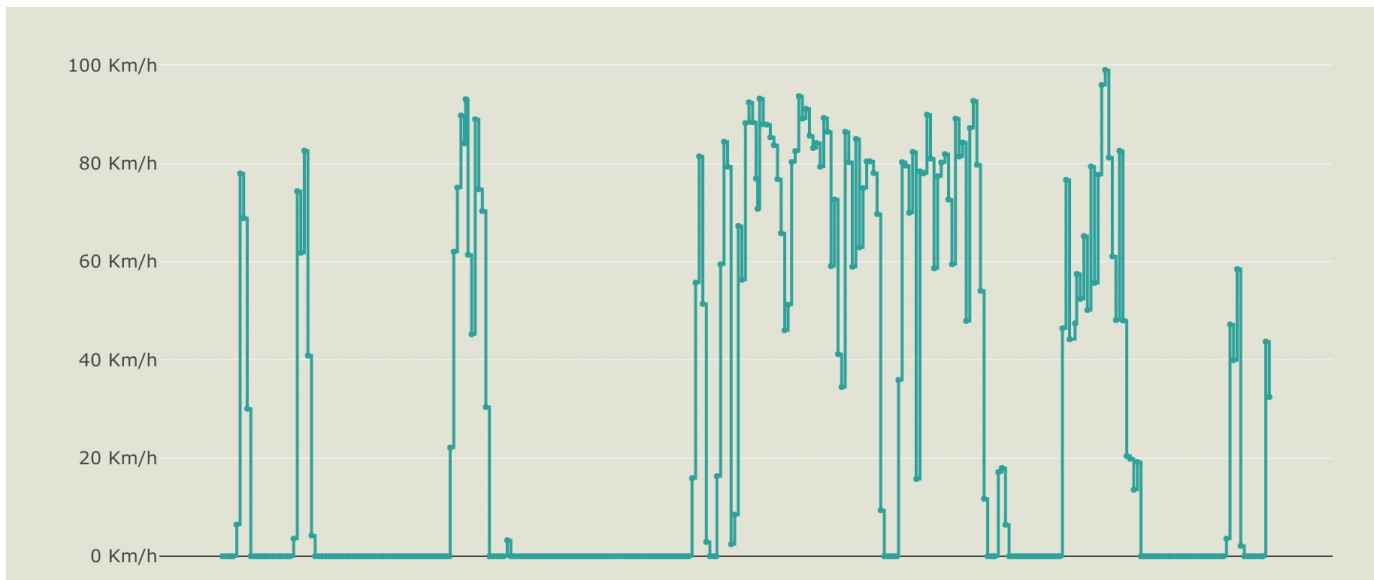
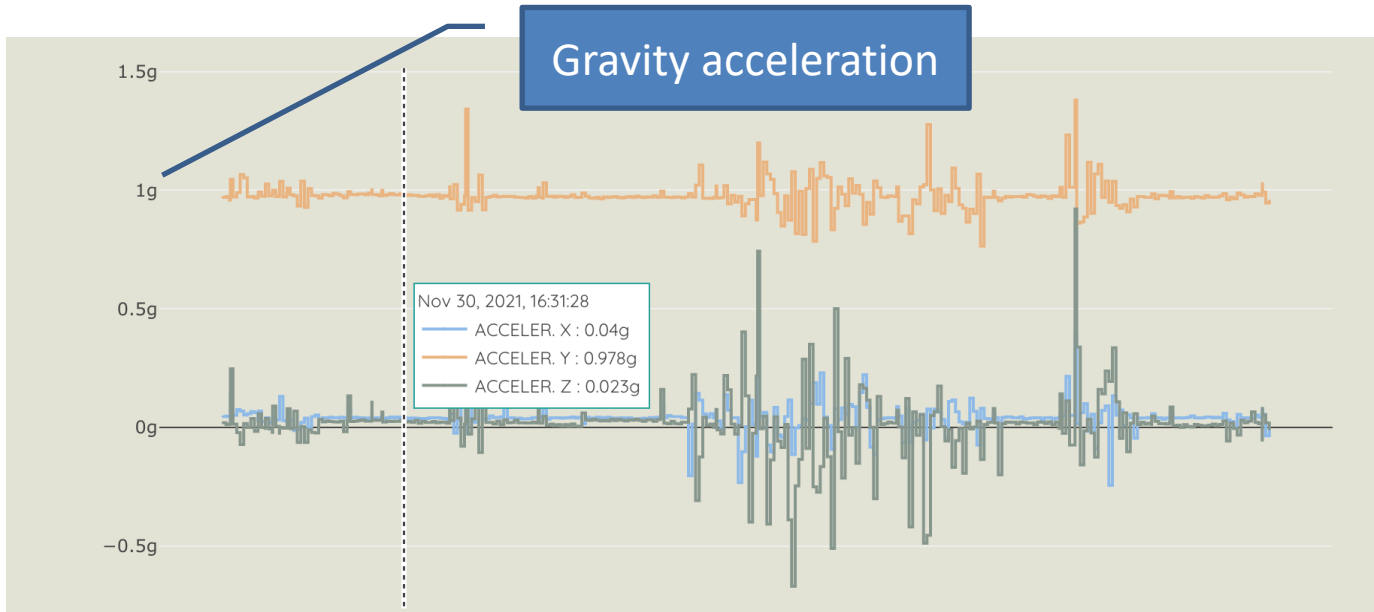
4x soft packaging edgeboard 1800 mm

Documentos electrónicos



Transporte ferroviario





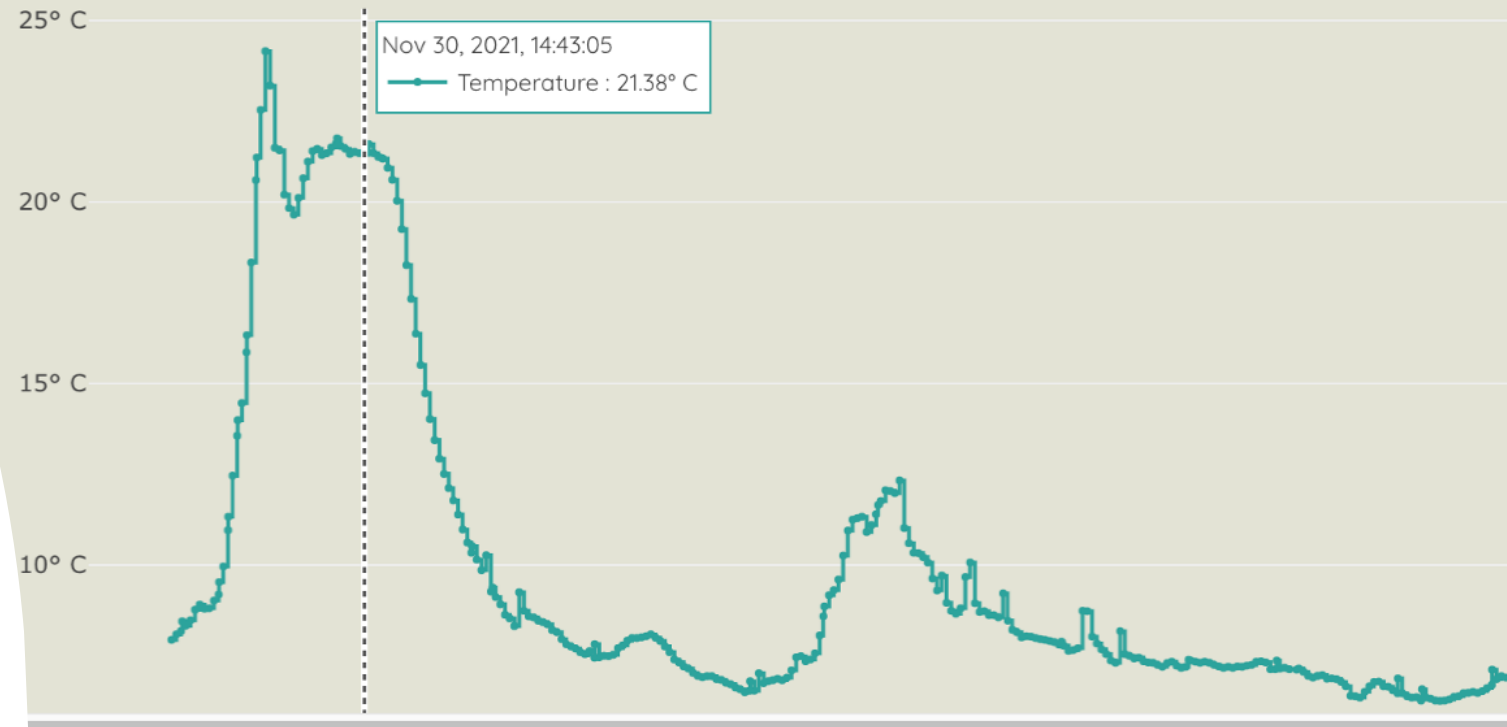
Vibration analysis
(vs. speed)

This project has received funding from the European Union's Horizon 2020 research and innovation programme under the Grant Agreement No. 860274



TrackOne Cloud Application

- Order and shipment management
- Access and users' management
- Track, Trace and Monitoring visualization
- Pdf generation and download



This project has received funding from the European Union's Horizon 2020 research and innovation programme under the Grant Agreement No. 860274



Eficiencia del combustible



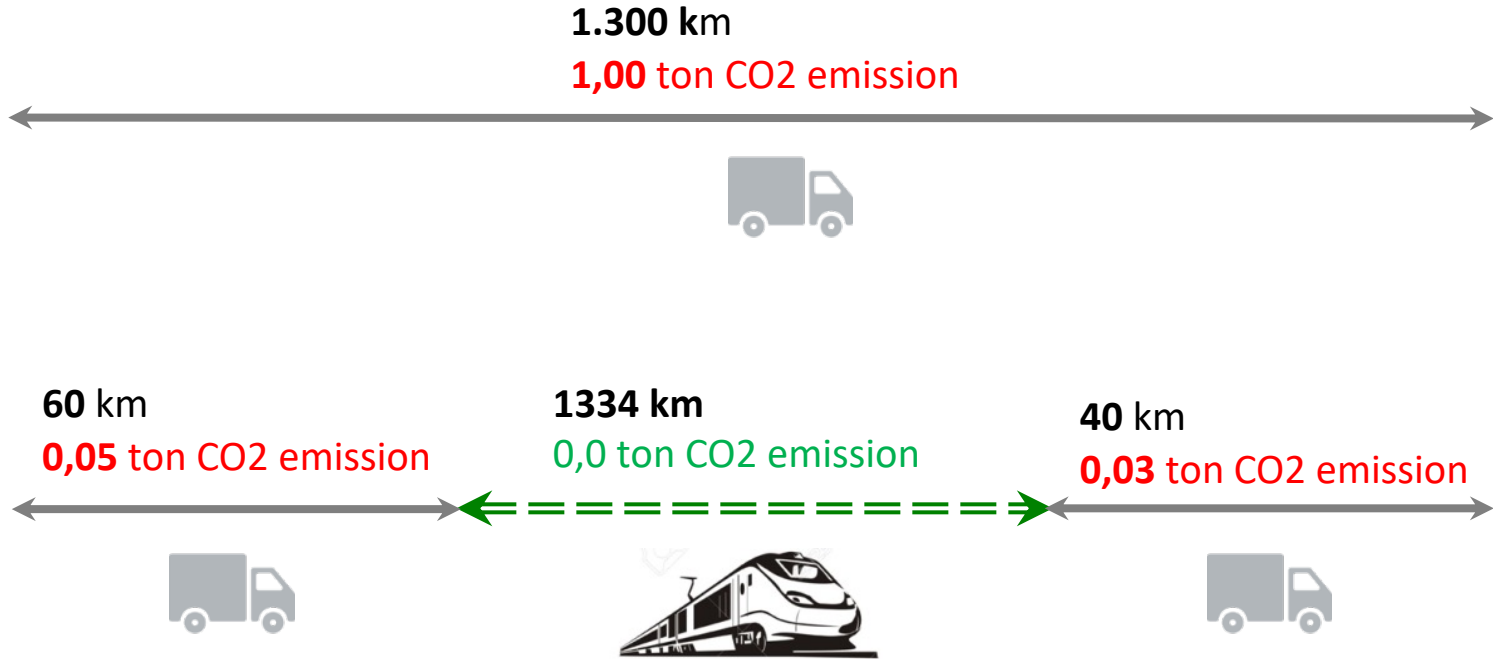
Fuente: Deloitte

Well-to Tank: gastos energéticos de la extracción el petróleo, su transporte, procesamiento y la entrega del combustible al tanque: proceso que tiene una alta eficiencia pero que genera muchos gases contaminantes.

Tank-to-Wheel: eficiencia del vehículo, desde que se carga la gasolina hasta que se mueve el vehículo: proceso es poco eficiente ya que hay pérdidas significantes, además que la eficiencia de un motor ronda entre el 20 y 30%.

Well-to-Wheel: la eficiencia es alrededor de 16 a 18%.

Route from Sant Sadurni d'Anoia (ES) to Alsheim (DE)



Modal shift outcome

- More than 3% extra payload
- 1.200 km shifted from road equal to 92%
 - 0,92 ton CO2 saved (approx.)
 - 92% less CO2 emission using the train
- <https://www.ecotransit.org/en/emissioncalculator/>

Conclusions based on calculation from EcoTransIT. Numbers are rounded and therefor we suggest to use more range. Certifications will be possible in the future.



La digitalización, para tener éxito, necesita colaborar e integrar tecnologías en el transporte



ALL WAYS ACTION S.L.



www.tenalach-consulting.com